



WeChat Official Account

COMPANY PRODUCT MANUAL

PROFESSIONAL ENERGY STORAGE BATTERY MANUFACTURER

ADDRESS:

Room 803, Building 3, Shenzhen New Generation
Industrial Park, Futian District, Shenzhen

No.7, Xiusheng Road, Kengzi Street, Pingshan
District, Shenzhen

E-MAIL: info@haileienergy.com

TEL: 0755-29471682

Hailei[®]

COMPANY:

Shenzhen HaiLei New Energy Co., Ltd.
Shenzhen HaiLei Energy Storage Co., Ltd.

Shenzhen HaiLei New Energy Co., Ltd.

CATALOGUE



Catalogue	2-3
Company profile	4-5
Scale of production capacity	6-7
Development history of the company	8-9
Honors and Certifications	10-11
Global strategic layout	12-13
Rack mounted energy storage series	14-15
Wall mounted energy storage series	16-21
Stackable series	22-31
Industrial and commercial ESS	32-35
Mobile energy storage generator	36-39
Lead acid replacement	40-41
Swapping/electric vehicle batteries	42-43

COMPANY PROFILE



Shenzhen Hailei New Energy Co., Ltd. was established in 2012 and is a high-tech enterprise that integrates research and development, design, production, and sales of energy storage lithium battery packs. Our main business includes household energy storage batteries, industrial and commercial energy storage, and intelligent battery swapping. Dedicated to providing professional customized solutions for customers in the global energy storage battery and outdoor power supply fields.

2012_Y FOUNDED TIME	400⁺ EMPLOYEES	60000⁺_W REGISTERED CAPITAL	5.1_{GWH} ABILITY
---	-------------------------------------	--	-------------------------------------

HaiLei is a state-level high-tech enterprise and a provincial-level specialized and special new enterprise. With independent intellectual property rights and industry-leading technical capabilities, has participated in the drafting and formulation of a number of National and China Tower standards for energy storage and electric vehicles. It has a R&D team of 50 people led by professional doctors, and independently develops and designs "HaiLei" brand electric vehicle battery and energy storage battery, and wholeheartedly provides competitive solutions and products for global customers. HaiLei shares frankly with global customers and supply partners, takes pragmatic responsibility, and creates excellence together.

PROFESSIONAL

Hailei®

HIGH QUALITY LITHIUM BATTERY

The company has 26,000 square meters of battery PACK production line, the use of advanced MES production execution system, to achieve accurate management from parts to finished product delivery; With more than 200 sets of professional production equipment, such as automatic laser spot welding machine, automatic sorting machine, the daily output of 10000 sets, the annual output can reach 5.1GWH; With an independent laboratory and nearly 30 sets of experimental equipment, we can conduct comprehensive performance testing of products to ensure that the products meet the design standards. With more than 1600 points, the battery pack burn-in equipment can realize the full inspection burn-in test of every battery pack delivered to the customer.



RECEPTION



RECEPTION



FACTORY



FACTORY

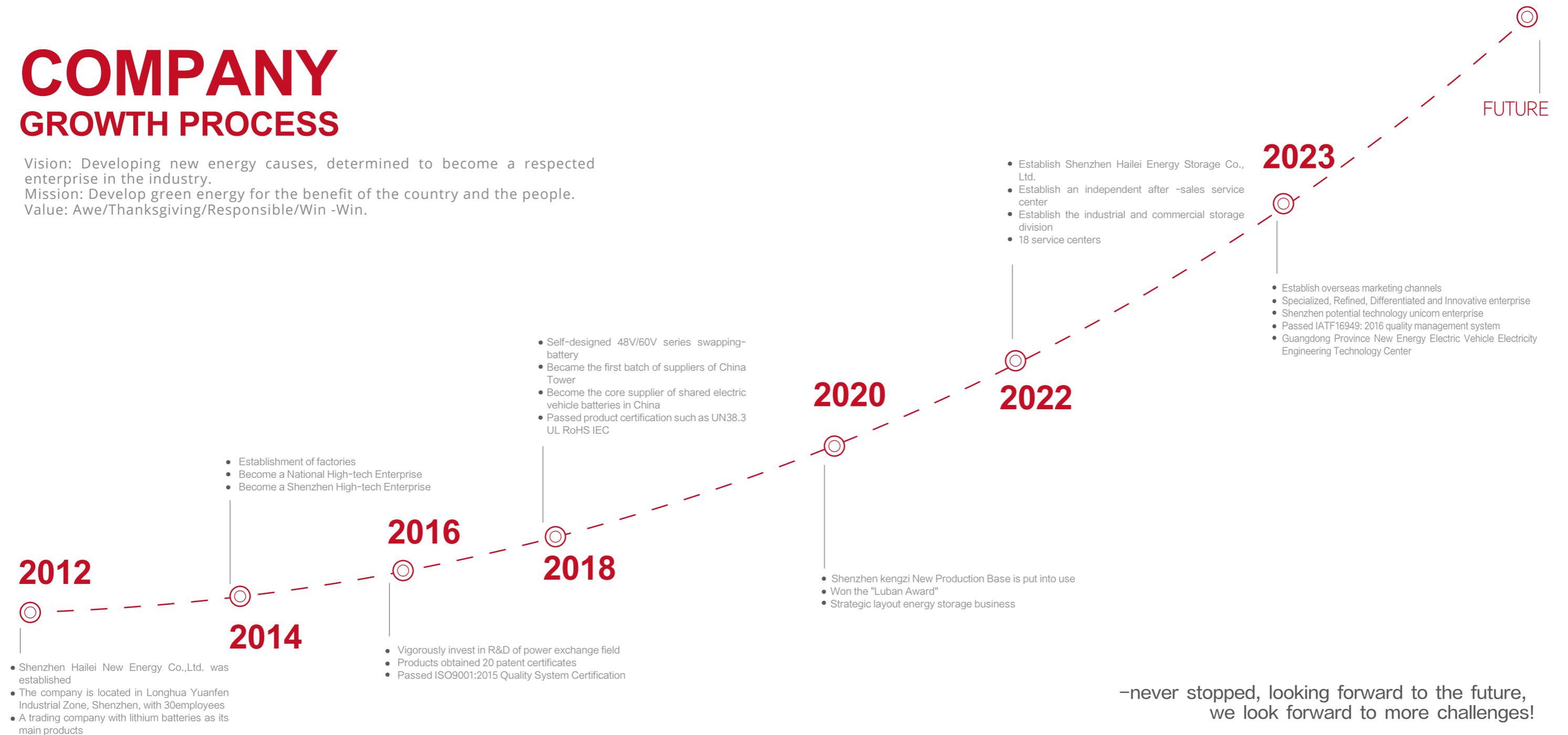


LABORATORY



COMPANY GROWTH PROCESS

Vision: Developing new energy causes, determined to become a respected enterprise in the industry.
 Mission: Develop green energy for the benefit of the country and the people.
 Value: Awe/Thanksgiving/Responsible/Win -Win.



—never stopped, looking forward to the future,
 we look forward to more challenges!

COMPANY HONOR

The company has a professional doctor led research and development team, independent research and development design of "Hailei" brand power and energy storage battery products. We have passed ISO9001:2015 quality management system and ISO 14001:2015 Environmental management system certification and OHSAS 18001: products have passed the international certification and obtained 8 invention patents, 17 utility model patents, 2 appearance patents and 11 software Copyrights, and won the 2021 Guangdong Province specialized new enterprise.



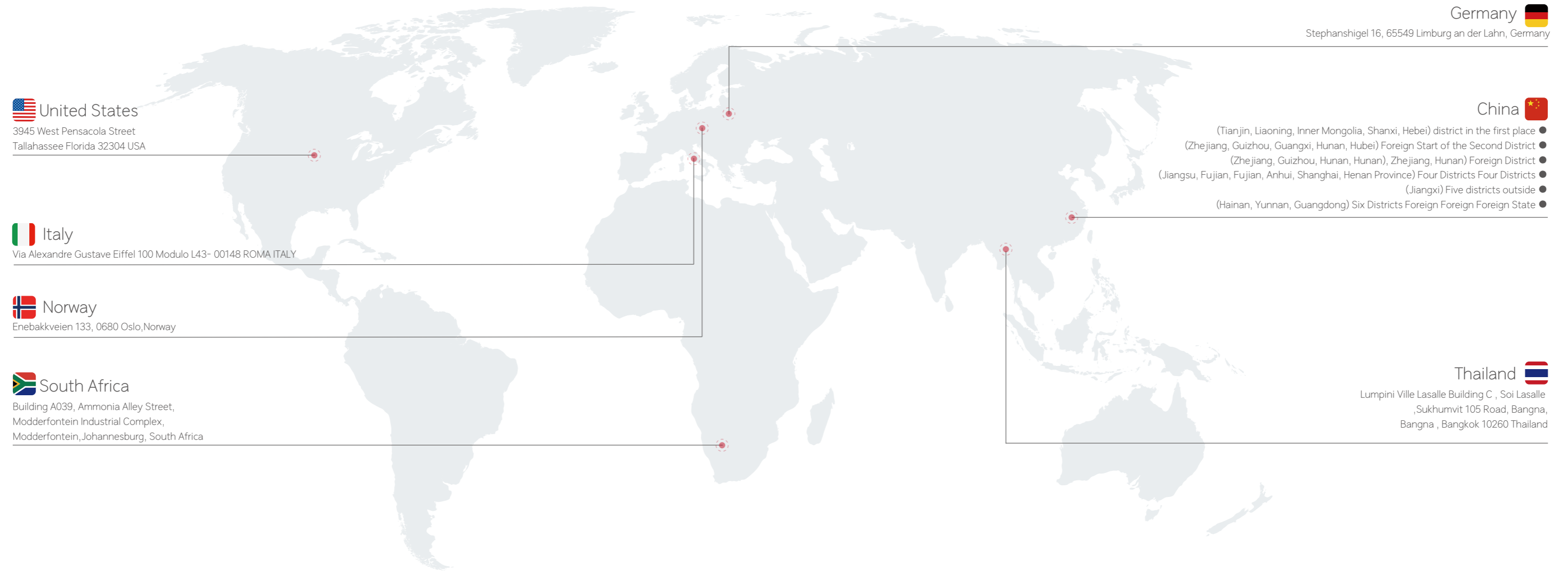
59
letters patent

15
Enterprise certificate

38
Product certification



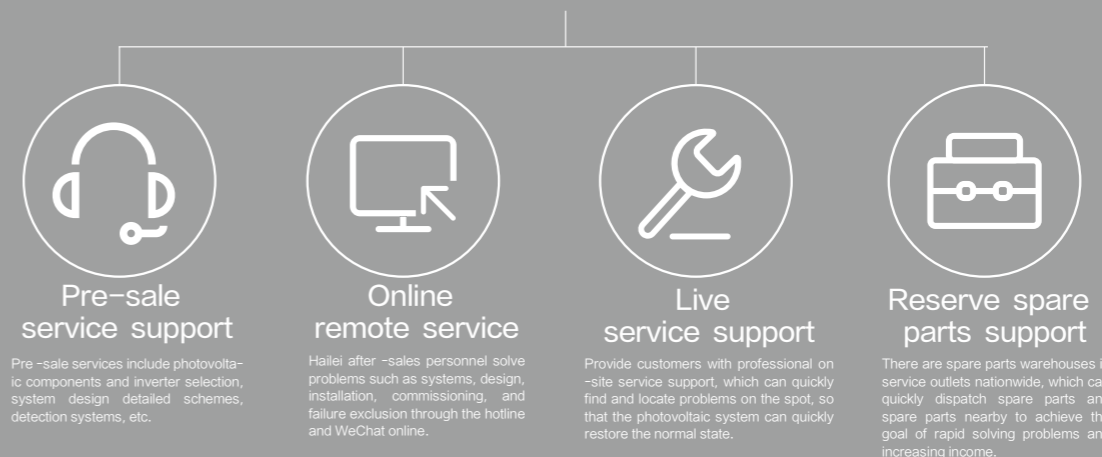
COMPANY LAYOUT



Quality control advantages

- With years of experience in lithium battery manufacturing, and a large number of test equipment. It can better guarantee the quality of products, and can prevent bad products from being in the factory. Reduce customer complaint rate and make customers worry-free.
- The experienced after-sales team can provide after-sales service in both Chinese and English to ensure that the after-sales service can be responded and resolved within 24 hours
- In line with the principle that meeting the needs of customers is our mission, the whole team of Hailei will devote themselves to meeting the needs of customers.

Service System Organization Framework



48V Rack-mounted LiFePO4 battery

48V/51.2V rack-mounted LiFePO4 battery, high energy density, stylish appearance, easy to install and expand, widely used in telecom base stations, commercial energy storage, UPS, Residential energy storage systems.



▲ This picture is for reference only



Light weight, Small size



Long cycle life, using high-quality LiFePO4 Cells, the cycle life is as high as 6000 times



Intelligent battery management system



Support a variety of communication protocols, support RS485, RS232, CAN etc



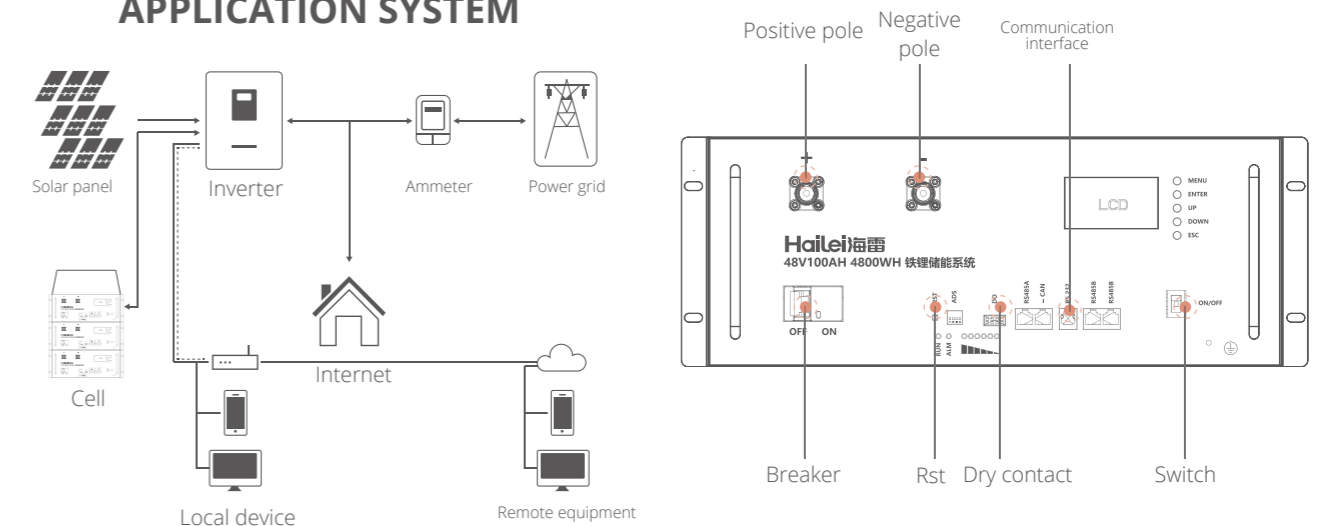
Compatible with a variety of inverters



In the extreme performance safety test, the battery will not catch fire, explode, leak, and be safer to use.

Basic Parameters	HL-LR48100	HL-LR48200
Nominal Voltage(V)	48/51.2	48/51.2
Nominal Capacity(Ah)	100	200
Energy(Wh)	4800/5120	9600/10240
Dimension(mm)	L460xW442xH177	L680xW442xH185
Weight(Kg)	45/47	88/92
Discharge Cut-off Voltage(V)	40.5(15S)/43.2(16S)	40.5(15S)/43.2(16S)
Charge Cut-off Voltage(V)	54.7(15S)/58.4(16S)	54.7(15S)/58.4(16S)
Communication Port	RS485,RS232 CAN	RS485,RS232 CAN
Cell serial number(pcs)	15S/16S	15S/16S
Working Temperature/°C	-10~60	-10~60
Design life	10+Years (25°C/77°F)	10+Years (25°C/77°F)
Cycle Life	>6000, 25°C/77°F, 80%DOD	>6000, 25°C/77°F, 80%DOD
Certification	CE/UN38.3	CE/UN38.3
Maximum continuous charge current	100A	100A
Maximum continuous discharge current	100A	100A

HOME ENERGY STORAGE BATTERY APPLICATION SYSTEM



48V Wall-mounted LiFePO4 Battery

48V/51.2V wall-mounted LiFePO4 battery, designed for residential energy storage, stylish and simple in appearance, Supports wall-mounted installation.



▲ This picture is for reference only



Light weight, Small size



Cycle life up to 6000 times



Intelligent battery management system



Support a variety of communication protocols, support RS485, RS232, CAN etc



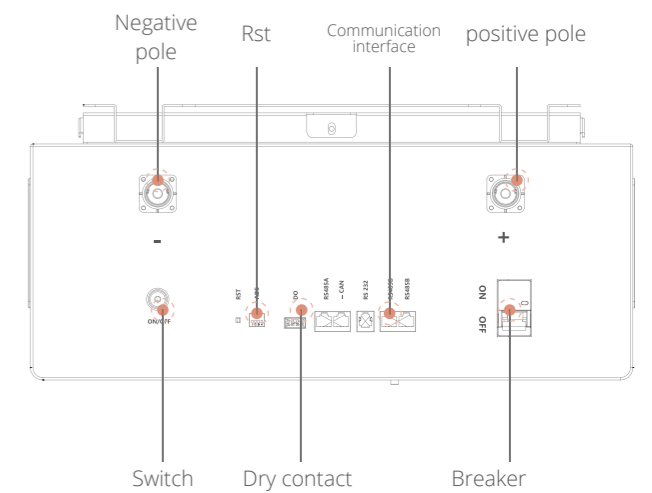
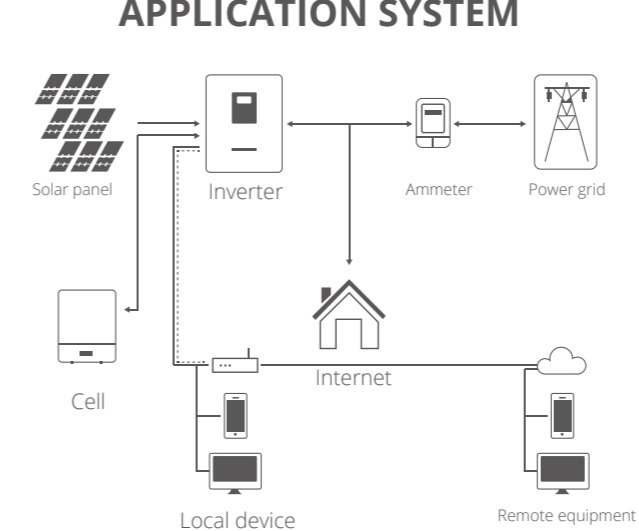
Compatible with a variety of inverters



In the extreme performance safety test, the battery will not catch fire, explode, leak, and be safer to use.

Basic Parameters	HL-PW512100
Nominal Voltage (V)	51.2
Nominal Capacity (Ah)	100
Energy (Wh)	5120
Dimension (mm)	L501×W452×H155
Weight (Kg)	52
Discharge Cut-off Voltage (V)	43.2(16S)
Charge Cut-off Voltage (V)	58.4(16S)
Communication Port	RS485,RS232 CAN
Cell serial number (pcs)	15S/16S
Working Temperature/°C	-10~60°C
Design life	10+Years (25°C/77°F)
Cycle Life	>6000, 25°C/77°F, 80%DOD
Certification	CBIEC 62619 CE/UN38.3 MSDS
Supports the max number of parallel connections	16
Maximum continuous charge current	100A
Maximum continuous discharge current	100A

HOME ENERGY STORAGE BATTERY APPLICATION SYSTEM



ATOM WB

5kWh Wall-mounted LiFePO4 Battery

5kWh wall-mounted LiFePO4 battery, designed for residential energy storage, stylish design and Supports wall-mounted installation.



▲ This picture is for reference only



APP monitoring
Real-time monitoring and Remote upgrade



IP65
Indoor and outdoor installation options



C3+ class Anti-corrosion battery housing



Various installation
Wall mounted & Floor standing



Cycle Life
Up to 6000+ cycles



High safety
Equipped with advanced BMS , with voltage, current, power, temperature, shunt trip and other protection functions



With active balancer
Extend the battery service life



Item	Parameters
Model	ATOM WB-512100
Nominal Voltage	51.2V
Working voltage	43.2-57.6V
Nominal Capacity	100AH
Energy	5120WH
Communication	CAN/RS485
Resistance	≤45 mΩ @ 50% SOC
Efficiency	> 96%
Scalability	Up to 15Units ,Suggest 8 Units Max
Alarms	Over Charge/Over Discharge/Over Current/Over Temperature/Short Circuit
Monitoring and Protection	Each Battery has Smart BMS,Breaker
Recommended Charge Current	50A
Max Charge current	100A
Recommended Charge Voltage	57.6V
BMS Charge Cut-off Voltage	58.4 V (3.65V/Cell)
Balancing Starting Voltage	3.4V/Cell
Compatible Inverter Power	5KW(for single module)
Max Continuous Discharge Current	100A
Peak Discharge Current	110 A (10s)
BMS Discharge Cut-off current	150 A (500ms)
BMS Discharge Cut-off Voltage	43.2V (2.7V/Cell)
Recommended Discharge DOD	90%
Dimensions (L*W*H)	550*165*480mm
Reference Weight	56KG approx
Terminal Type	Quick Connector
Case Material	SPCC
Protection Class	IP65
Auxiliary heating function	Optional
Discharge Temperature	-20-60℃
Charge Temperature	0-45℃
Storage Temperature	10-30℃
BMS High temperature Cut-off	65℃
Compatible Inverters	DEYE /Afore /MEGAREVO/SOLIS/Growatt /LUXPOWER/Voltronics/Goodwe/ SMA/Victron/SOROTEC/MUST/etc.
Certification	CE/IEC62619/CEI-021/UN38.3/MSDS

ATOM WB MAX 10kWh Wall-mounted LiFePO4 Battery

10kWh wall-mounted LiFePO4 battery, designed for residential energy storage, stylish design and Supports wall-mounted installation.

▲ This picture is for reference only



APP monitoring
Real-time monitoring and Remote upgrade



IP65
Indoor and outdoor installation options



C3+ class Anti-corrosion battery housing



Various installation
Wall mounted & Floor standing



Cycle Life
Up to 6000+ cycles



High safety
Equipped with advanced BMS , with voltage, current, power, temperature, shunt trip and other protection functions



With active balancer
Extend the battery service life

Item	Parameters
Model	ATOM WB MAX-512200
Nominal Voltage	51.2V
Working voltage	43.2-57.6V
Nominal Capacity	200Ah
Energy	10240Wh
Communication	CAN/RS232/RS485
Resistance	≤45 mΩ @ 50% SOC
Efficiency	> 96%
Scalability	Up to 15Units ,Suggest 8 Units Max
Alarms	Over Charge/Over Discharge/Over Current/Over Temperature/Short Circuit
Monitoring and Protection	Each Battery has Smart BMS, Breaker
Recommended Charge Current	75A
Max Charge current	100A
Recommended Charge Voltage	57.6V
BMS Charge Cut-off Voltage	58.4V (3.65V/Cell)
Balancing Starting Voltage	3.4V/Cell
Compatible Inverter Power	5KW(for single module)
Max Continuous Discharge Current	150A
Peak Discharge Current	160A (1s ,1-5s settable)
BMS Discharge Cut-off current	200A (100ms, 100-500ms settable)
BMS Discharge Cut-off Voltage	43.2V (1s) (2.7V/Cell)
Recommended Discharge DOD	90%
Dimensions (L*W*H)	"550*236*699mm"
Reference Weight	215.6lbs(98Kg)
Terminal Type	Quick Connector
Case Material	SPCC
Protection Class	IP65
Auxiliary heating function	Optional
Discharge Temperature	-20-60℃
Charge Temperature	0-45℃
Storage Temperature	10-30℃
BMS High temperature Cut-off	65℃
Compatible Inverters	DEYE /Afore /MEGAREVO/SOLIS/Growatt /LUXPOWER/Voltronics/Goodwe/ SMA/Victron/SOROTEC/MUST/etc.
Certification	CE/UN38.3/MSDS

ATOM LS

5KW output power, supporting 4 clusters in parallel, household micro-grid, touching LCD, and supporting screen selection protocols.



▲ This picture is for reference only



APP monitoring
Real-time monitoring and Remote upgrade



IP65
Indoor and outdoor installation options



C3+ class Anti-corrosion battery housing



Cycle Life
Up to 6000+ cycles



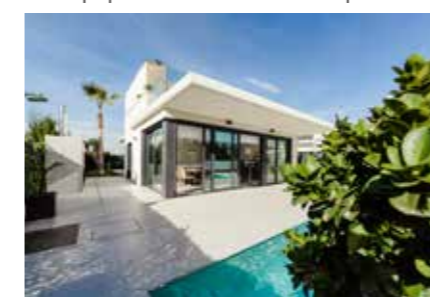
High safety
Equipped with advanced BMS , with voltage, current, power, temperature, shunt trip and other protection functions



With active balancer
Extend the battery service life

Basic Parameters	2-module	3-module
Model	ATOM LS-10.24	ATOM LS-15.36
Number of battery parallel	2	3
Rated energy	10.24KWh	15.36KWh
Dimension (L*W*H mm)	600*167*1240mm	600*167*1700mm
Rated voltage	51.2V	51.2V
Rated Capacity	200Ah	300Ah
Rating charging and discharge multiplied	0.5C	0.5C
Depth of discharge	90%	90%
Voltage work	43.2-58.4V	43.2-58.4V
Output Power	5KW	5KW
Communication Interface	CAN/485	CAN/485
Cycles	6000@25℃ /0.5C/80%DOD	6000@25℃ /0.5C/80%DOD
Protection level	IP65	IP65
Cooling method	Natural cooling	Natural cooling
Run temperature range	-20-55℃	-20-55℃
Storage temperature	-15-40℃	-15-40℃
Certification standards	IEC 62619 / CE / UN38.3 /MSDS	IEC 62619 / CE / UN38.3 /MSDS

Application scope



Household



Company



Hotel

HERO-LVA SERIES

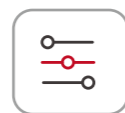
5KW output power, supporting 4 clusters in parallel, household micro-grid, touching LCD, and supporting screen selection protocols.



▲ This picture is for reference only



LED screen display the parameters of the equipment in real time



Thin stack design
Modular structure for easy installation



Intelligent battery management system



Support a variety of communication protocols,
support RS485, RS232, CAN etc

Basic Parameters	2-module	3-module
Model	HERO-LVA512200	HERO-LVA512300
Number of battery parallel	2	3
Rated energy	10.24KWh	15.36KWh
Dimension (W*H*Tmm)	600*160*1125mm	600*160*1575mm
Rated voltage	51.2V	51.2V
Rated Capacity	200Ah	300Ah
Rating charging and discharge multiplied	0.5C	0.5C
Depth of discharge	90%	90%
Voltage work	43.2-58.4V	43.2-58.4V
Output Power	5KW	5KW
Communication Interface	CAN/485	CAN/485
Cycles	6000@25°C /0.5C/80%DOD	6000@25°C /0.5C/80%DOD
Protection level	IP65	IP65
Cooling method	Natural cooling	Natural cooling
Run temperature range	-20-55°C	-20-55°C
Storage temperature	-15-40°C	-15-40°C
Relative humidity	0-90%RH	0-90%RH
Certification standards	CB IEC 62619 / CE / UN38.3/ MSDS	CB IEC 62619 / CE / UN38.3/ MSDS

Scope



Household



Company



Hotel

ATOM HS

New generation high-voltage stackable battery system, suitable for high power residential energy storage application.



▲ This picture is for reference only



APP monitoring
Real-time monitoring and Remote upgrade



IP65
Indoor and outdoor installation options



C3+ class Anti-corrosion battery housing



Cycle Life
Up to 6000+ cycles



High safety
Equipped with advanced BMS, with voltage, current, power, temperature, shunt trip and other protection functions



High power
Each battery cluster can deliver power up to 40KW Max

Basic Parameters	3-Modules	4-Modules	5-Modules	6-Modules	7-Modules	8-Modules
Model	ATOM HS-15.36	ATOM HS-20.48	ATOM HS-25.6	ATOM HS-30.72	ATOM HS-35.84	ATOM HS-40.96
Battery type	LiFePO4					
Nominal voltage	153.6V	204.8V	256.0V	307.2V	358.4V	409.6V
Nominal capacity	15.36kWh	20.48kWh	25.6kWh	30.72kWh	35.84kWh	40.96kWh
Max charge and discharge current	100A					
Max charge and discharge power	15.36kW	20.48kW	25.6kW	30.72kW	35.84kW	40.96kW
Communication	CAN/RS485/WIFI					
Weight	182Kg	232Kg	282Kg	332Kg	382Kg	432Kg
Dimensions (L*W)	590*405mm					
Dimensions (H)	675mm	835mm	995mm	1155mm	1315mm	1475mm
Working temperature range	charge 0~45°C, discharge -20~55°C					
Efficiency	≥97%					
Cycle life	6000cycles					
Designed lifespan	≥10 years					
Shell protection grade	IP65					
Shell protection grade	C3+ class anti-corrosion					
Auxiliary heating function	Optional					
Parallel connection	suggest ≤ 4 clusters					
Installation	Floor standing					
Compatible inverter	Afore ,Growatt ,Solis , DEYE ,Pylon,Megarevo ,INVT, and customization					
Certification	CB-IEC62619,CE,UN38.3					

Product Applications

Off-grid, Hybrid, Back-up, Peak Shaving, and Virtual Power Plant Home Appliances, Uninterrupted Power Supply etc.



HERO-HVS1 series/

Residential energy storage system, modular high-voltage battery, suitable for residential energy storage. One set provides electricity for the whole house.



▲ This picture is for reference only



Support a variety of communication protocols, support RS485, RS232, CAN etc



Modular structure for easy installation



Long cycle life



Intelligent battery management system



LED lights display the parameters of the equipment in real time



Supports up to 4 clusters in parallel



Can be used with hybrid inverter



Basic Parameters	3-module	4-module	5-module	6-module
Nominal Capacity(KWh)	7.68	10.24	12.8	15.36
Cell Matching	48S1P	64S1P	80S1P	96S1P
Working Voltage Range(V)	136.8-172.81	182.4-230.4	228-288	273.6-345.6
Weight (kg)	115	145	175	205
Nominal voltage(V)	153.6	204.8	256.0	307.2
Dimension (WxDxH) (mm)	550x430 x697.5	550x430 x826.5	550x430 x955.5	550x430 x1084.5
Battery Type	LFP(LiFePO4)			
Nominal Working Current	50			
Communication Port	CAN/RS485			
Working Temperature Range	Charge:0-45°C/Discharge:-10-50°C			
Waterproof	IP55			
Installation Method	Floor-standing			
Cycle Life	>6000, 25°C/77°F, 80%DOD			
Peak charge/discharge current(@25°C,5S)	63A			
Discharge rate of Module	≤3.5%/month/@25°C			
Module Series connection/Module	3S-6S			
Parallel connection	4 units in parallel			

Modular free stacking, easy to use, a variety of choices



ATOM AES

Outdoor stack battery system all-in-one

Residential energy storage system, modular battery, suitable for residential energy storage, one set provides electricity for the whole house.



▲ This picture is for reference only



APP monitoring
Real-time monitoring and Remote upgrade



IP65
Indoor and outdoor installation options



With active balancer
Extend the battery service life



Cycle Life
Up to 6000+ cycles



High safety
Equipped with advanced BMS , with voltage, current, power, temperature, shunt trip and other protection functions

Basic Parameters	1-module	2-module
Argument	6KW+5KWh	6KW+10KWh
Output power	5000W	6000W
Input voltage range	220-240VAC	220-240VAC
Output voltage	230VAC+5%	230VAC+5%
Output frequency	50Hz ± 0.3Hz/60Hz ± 0.3Hz	50Hz ± 0.3Hz/60Hz ± 0.3Hz
Battery type	LiFeP04 battery	LiFeP04 battery
Depth of discharge	51.2V100Ah	51.2V100Ah
Number of batteries	1	2
Charging current	80A	80A
Output waveform	Pure sine wave	Pure sine wave
Output efficiency	> 93%	> 93%
Weight	About 100Kg	About 160Kg
Dimension	600*228*880	600*228*1280
Protection class	IP65	IP65
Cooling mode	Air cooling	Air cooling
Operating temperature range	0-55 C	0-55 C
Storage temperature	-15-40 C	-15-40 C
Relative humidity	0-90%RH	0-90%RH
Certification standard	CE	CE

Application scope



Household



Company



Hotel

215kWh

The energy storage system helps to use and manage energy more effectively, reduce electricity bills, and can be applied to various scenarios, such as power user peak-valley arbitrage, power grid frequency regulation and peak regulation, improving new energy consumption, and improving grid power supply stability, etc.



▲ This picture is for reference only



Multiple fire design guarantee, combining anti-consumption combination



Multi-income of Peak Valley arbitrage



Intelligent cloud, 24H system performance monitoring, real-time safety warning, periodic system automatic inspection



modular design, flexible deployment

Basic Parameters	Project	Parameters
Battery parameters	Battery Type	Lithium iron phosphate
	System nominal capacity (kWh)	215
	Charge and discharge rate	0.5C
Stand Parameters	Battery cabinet size	1350mm(W)X1350mm(D)X2200mm(H)
	Nominal capacity	280Ah
	Nominal voltage	768V
	Standard charging rate	0.5C
	Maximum continuous discharge rate	0.5C
	Rated power	215kWh
	Operating voltage range	672V-864V
Battery pack Parameters	Installation position	IP54
	Continuous output power	100KW
	0.5C standard discharge capacity 0.5C	1350mm(W)X1350mm(D)X2200mm(H)
	Nominal Voltage	280Ah
	Operating voltage range	768V
	Standard charge condition	0.5C
	Maximum continuous discharge rate	0.5C
Run function	Maximum charge current	215kWh
	Operation Temperature Range	672V-864V
	Battery pack size	1097(L)x800(W)x246(H)mm
	Shaving peaks and filling valleys	Available (Standard)
	Off-grid/parallel operation	Available (Optional)
Communication Parameters	Smooth photovoltaic output	Available (Optional)
	Cooperate with smart microgrid	Available (Optional)
	Backup power	Available (Optional)
Communication Parameters	Communication Interface	Ethernet
	Communication Protocol	Modbus RTU/Modbus TCP/MQTT/Kaf-ka/IEC60870-104/IEC61850 ETC

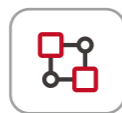
Optical storage hybrid integrated charging station

40KW-50KW+125kWh optical storage integrated small power station based on lithium iron phosphate battery technology. This system consists of a group of 125kWh battery storage units, 1 set of 50kW optical storage charging inverters, and 2 sets of 20kW smart DC charging pile composition.

▲ This picture is for reference only



equipped with fire protection system



Modular standard module 16S1P-51.2V280AH



All -in -one transportation, simple construction on -site construction C4 anti -corrosion level,



Multiple protection

Item	Parameters	
Battery Cabinet Parameters	Dimensions of outdoor energy storage cabinets	1050mm(W)X1000mm(D)X2350mm(H)
	Nominal capacity	314Ah
	Nominal Voltage	409.6V
	Standard charging current	0.5C/25℃
	Maximum continuous discharge power	160A/25℃
	Rated electricity	128KWh
	Working voltage range	384V-460.8V
	Maximum charging voltage	3.6V
	Single minimum discharge voltage	3
	Protection level	IP65
cooling method	Top mounted air conditioning cooling	
Battery string Parameters	Battery pack size	482.6mm(W)X750mm(D)X220mm(H)
	Nominal capacity	314Ah
	Nominal Voltage	51.2V
	Standard charging	0.5C/25℃
	Maximum continuous discharge power	0.5C/25℃
	Energy	16.076KWh
	Working voltage range	48V-57.6V
	Maximum charging voltage	3.6V
	Single minimum discharge voltage	3.0V
	Insulation performance	≥1000Ω/V
Single cluster configuration information	Battery	51.2V314AH
	BMU BMU	16S
	High -pressure control box	128S
	Outdoor cabinet	1050*1000*2350mm
	Photovoltaic energy storage inverter	50KW
	Charging pile	20KW
	Fire Fighting System	FGS-XR1000E
	Communication cable	Supporting facilities
	Power cable	Supporting facilities

ATOM SC

Integration portable photovoltaic storage charging machine

The 3.5KW/3.5kwh mobile energy storage trolley integrates energy storage batteries and hybrid inverters, which is equivalent to a small mobile power station; as a distributed energy storage power source.



▲ This picture is for reference only



Light weight, Small size



Long cycle life



Intelligent battery management system



Internal use of LiFePO4 battery



High power intelligent AC coupling machine



In the extreme performance safety test, the battery will not catch fire, explode, leak, and be safer to use.

Basic Parameters	Specification
Model	ATOM SC-3.5 (movable)
Battery type	LiFe PO4
Capacity	3686.4Wh/16S1P
Pv input	12Vdc-150Vdc 25A /2400w max
Ac output	230V 10A/2300W Max
Operating temperature	0°C -40°C
Ac output	220V/3600W Max
USB-C1 output	PD100W
USB-C2 output	PD65W
USB-A1~A4output	4X18W
Ac output waveform	sine wave output
Cigarette lighter output	12V/10A Max
Ec5 output	12V/30A Max
Dc output	12V/10A Max
Car charger output	3500W Max
Car charger APP control	wifi and bluetooth connect to internet
Size(W* H* D)mm	500*708.5*240mm

Application scope



Outdoor construction



Car charging

Mobile Energy Storage Generator

The 5KW/5kwh mobile energy storage trolley integrates energy storage batteries and hybrid inverters, which is equivalent to a small mobile power station; as a distributed energy storage power source.

▲ This picture is for reference only



Light weight, Small size



Long cycle life



Intelligent battery management system



Internal use of LiFePO4 battery



High power intelligent AC coupling machine



In the extreme performance safety test, the battery will not catch fire, explode, leak, and be safer to use.

Basic Parameters	Specification
Grid output Parameters(ac)	
Rated AC output power	5000VA
Rated AC output current	21.7A
THDI	<3%
Rated grid voltage/Grid voltage range	230Vac/176-270Vac
Rated grid frequency/Grid frequency range	50Hz(45-54Hz)/60Hz(55-65Hz)
Type of grid connection	AC Charging connector
Eps output	
EPS rated voltage	220/230/240Vac
EPS rated frequency	50/60Hz
Max. EPS power	5000VA
EPS overload protection	150%,30S
THDU	<2%
Type of output connection	Socket panel、AC Charging connector
Switch times	<20mS
BatteQ Parameter	
Batley type	LiFePO4 battery
Batley rated voltage	51.2V
Capacity	100AH
Batley voltage range	42-58V
Max. charging current	75A
Max. discharging current	100A
Other System Parameter	
Max. efficiency	95%
Cooling method	FAN
Storage/Operation relative humidity	10-90%
Operating temprature range	-20°C~50°C
Max. charging current	2000m
Dimension(W*D*H)	700*424*482mm



12V-LiFePO4-battery

Replacing lead-acid batteries, widely used in RVs, golf carts, yachts, solar street lights, photovoltaic energy storage systems, UPS, etc.

▲ This picture is for reference only



Green environmental protection pollution-free



Light weight, Small size



Long cycle life



IP65 waterproof and dustproof rating



In the extreme performance safety test, the battery will not catch fire, explode, leak, and be safer to use.

Model	12100	12150	12200
Nominal voltage	12.8	12.8V	12.8
Rated capacity	100Ah	150Ah	200Ah
Dimension(mm)	326x172x216	483x170x240	522x242x218
Weight	13KG	20KG	23KG
Cycle life	4000 times	4000 times	4000 times
Charging cut-off voltage	14.6V	14.6V	14.6V
Discharging cut-off voltage	10V	10V	10V
Operating temperature	-20°C~60°C	-20°C~60°C	-20°C~60°C
Storage temperature	-20°C~25°C	-20°C~25°C	-20°C~25°C
Maximum charge current	100A	100A	100A
Maximum discharge current	100A	100A	100A
Internal Impedance	Assemblage Impedance≤100mΩ		



12V100AH



12V150AH



12V200AH

swapping/electric vehicle batteries

Electric vehicle lithium battery energy saving, green, environmental protection, low carbon "performance strong" use is also relatively light, fast.



▲ This picture is for reference only



GPS/ Beidou positioning system



Light weight, Small size



Long cycle life



Scan the code to change the battery, and start sailing in 10 seconds



Smart BMS



In the extreme performance safety test, the battery will not catch fire, explode, leak, and be safer to use.

Suitable for the crowd

- Swapping battery for express delivery
- Swapping battery for take-out delivery
- Batteries of electric motorcycle for community residents traveling

Item	Charging Battery	Switching Battery
Charging time	6-10H	5S
Endurance mileage	40Km	Unlimited
Weight	30kg	6kg
Battery Life	1-2Year	Unlimited

Model	Nominal voltage	Rated capacity	Size	Weight	Cycle life	Charging cut-off voltage	Discharging cut-off voltage	Operating temperature	Storage temperature
Vehicle battery									
4820	51.2V	20Ah	235x155x166mm	12kg	3000	58.4V	40V	-20°C~60°C	-20°C~25°C
4830	51.2V	30Ah	290x200x170mm	14kg	3000	58.4V	40V	-20°C~60°C	-20°C~25°C
4860	51.2V	60Ah	590x220x195mm	30kg	3000	58.4V	40V	-20°C~60°C	-20°C~25°C
6020	64V	20Ah	235x185x170mm	14kg	3000	73V	50V	-20°C~60°C	-20°C~25°C
6030	64V	30Ah	195x190x325mm	18kg	3000	73V	50V	-20°C~60°C	-20°C~25°C
6050	64V	50Ah	380x285x190mm	29.5kg	3000	73V	50V	-20°C~60°C	-20°C~25°C
7220	76.8V	20Ah	184x162x279mm	14kg	3000	87.6V	60V	-20°C~60°C	-20°C~25°C
7230	76.8V	30Ah	430x220x160mm	26kg	3000	87.6V	60V	-20°C~60°C	-20°C~25°C
7250	76.8V	50Ah	285x445x187mm	35kg	3000	87.6V	60V	-20°C~60°C	-20°C~25°C
Swapping									
4820	51.2V	20Ah	290x175x145mm	10KG	1200	58.4V	40V	-20°C~60°C	-20°C~25°C
4825	51.2V	25Ah	290x175x145mm	10.5KG	1200	58.4V	40V	-20°C~60°C	-20°C~25°C
4830	51.2V	30Ah	300x180x170mm	13KG	1200	58.4V	40V	-20°C~60°C	-20°C~25°C
6020	64V	20Ah	290x175x145mm	12KG	1200	73V	50V	-20°C~60°C	-20°C~25°C
6030	64V	30Ah	320x180x170mm	15KG	1200	73V	50V	-20°C~60°C	-20°C~25°C